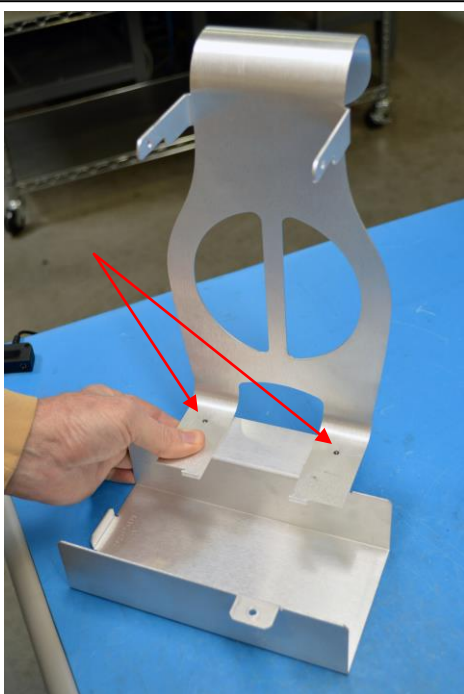
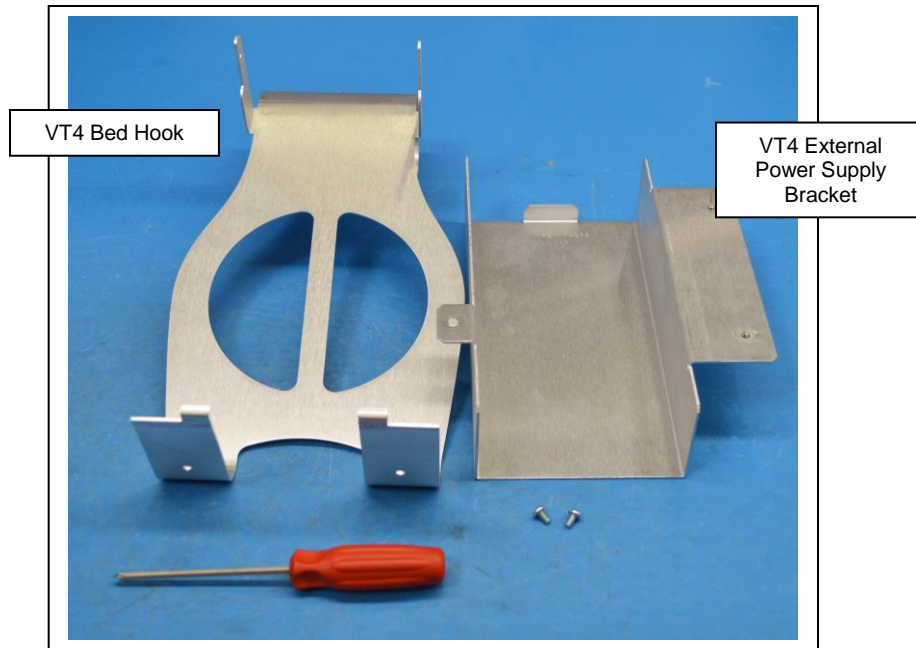
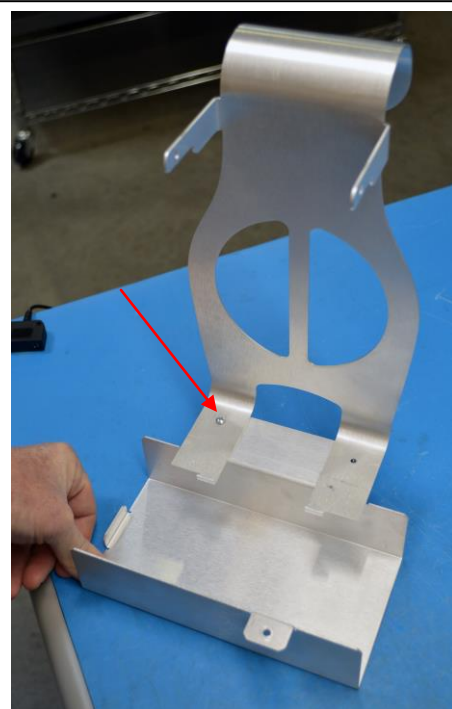


VASCUTHERM 4 BED HOOK/PS BRACKET ASSEMBLY

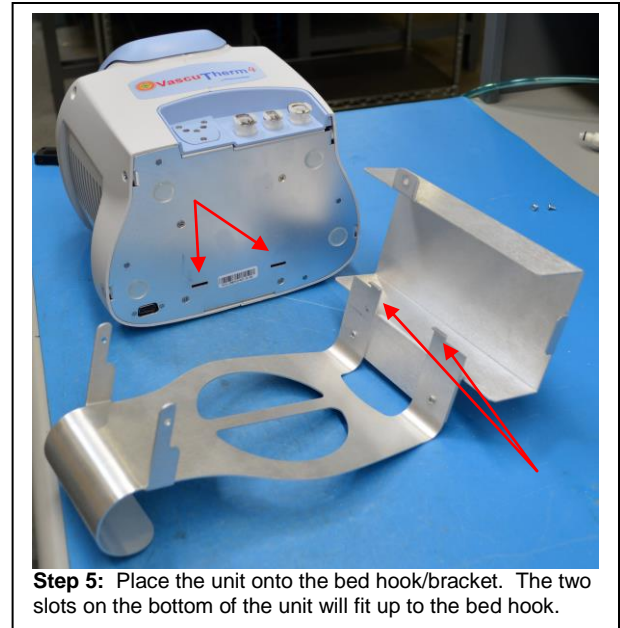
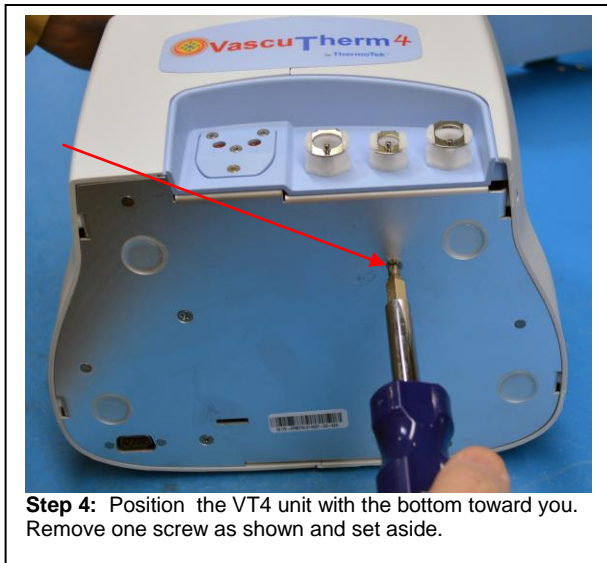
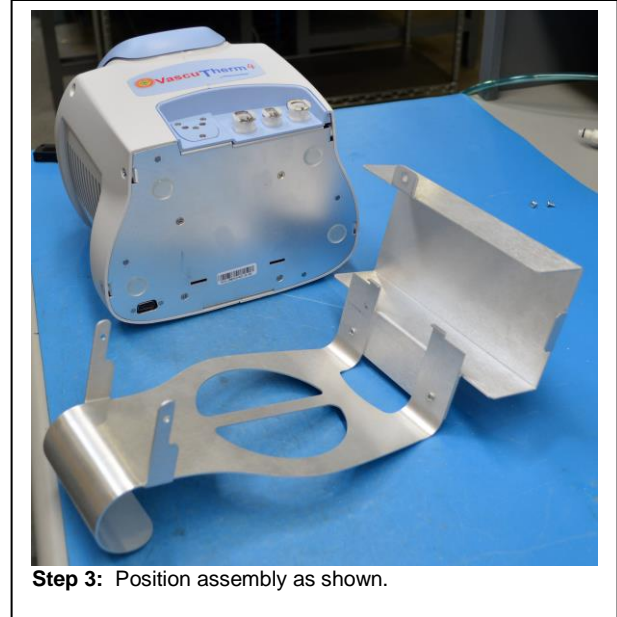
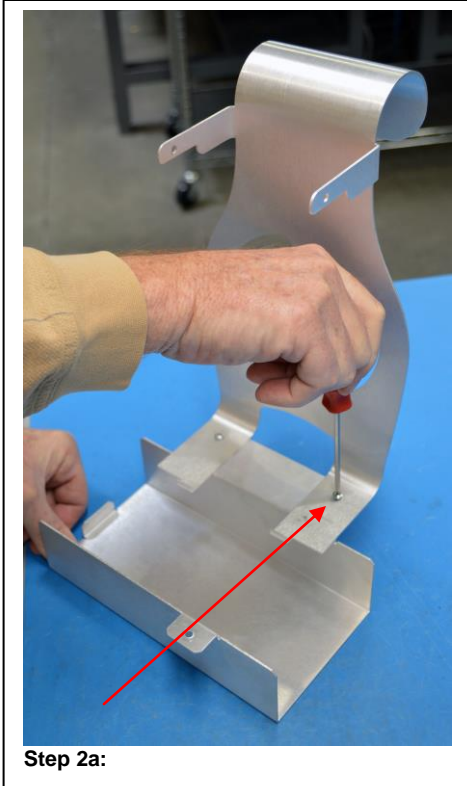
Part Number: 0P9KVT4BHK



Step 1: Place the bed hook on top of the bracket lining up the installation holes as shown.



Step 2: Install (2) 6-32 x 1/4" Phillips pan screws to secure the bed hook to the bracket.





Step 6: Unit to bed hook/bracket.



Step 7: Position the unit upright.



Step 8: Unscrew and remove the reservoir cap.



Step 9: Install (2) M3x6 Phillips flat screws to secure the bed hook to the top of the unit.



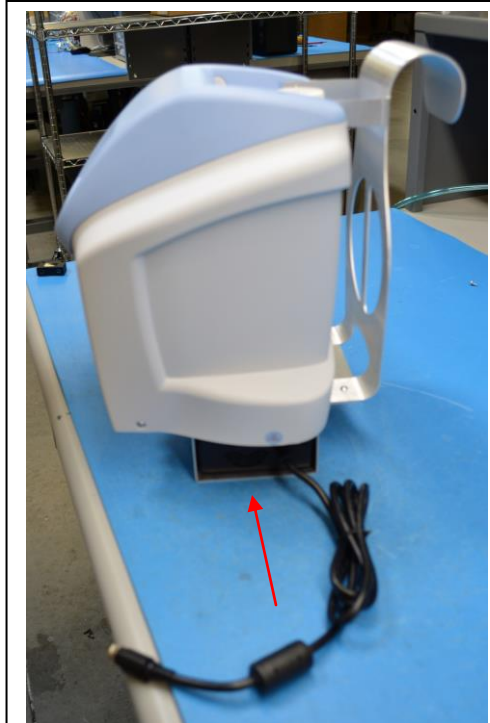
Step 9a:



Step 10: Replace the reservoir cap.



Step 11: Secure the bracket to the bottom of the unit by replacing the screw previously removed.



Step 12: Slide the power supply into the bracket.



Step 12a: Continue to slide the power supply until it meets the bracket stop.



Step 13: Plug in the power supply to the appropriate port on the back of the unit.